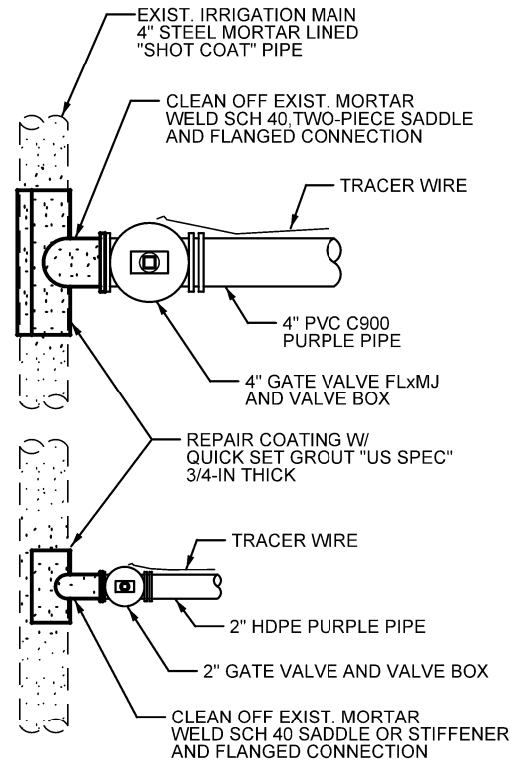


**TYPICAL IRRIGATION WATER LINE  
TRENCH SECTION**



**EXIST. IRRIGATION  
MAIN LINE CONNECTION**

**NOTES**

1. INSPECTION: PRIOR TO BACKFILLING, SECURE INSPECTION OF INSTALLATION BY ENGINEER OR DISTRICT REPRESENTATIVE.
2. BACKFILL: PROVIDE AND PLACE PER DISTRICT STANDARD SECTION 31 05 13. COMPACT PER SECTION 31 23 26 TO A MODIFIED PROCTOR DENSITY OF 95 PERCENT OR GREATER. MAXIMUM LIFT THICKNESS IS 8 INCHES BEFORE COMPACTION.
  - A. DO NOT USE SEWER ROCK OR RECYCLED RAP AGGREGATE IN THE PIPE ZONE.
  - B. COMPACT BEDDING AROUND PIPE.
  - C. FLOWABLE FILL (ONLY USE AS DIRECTED BY DISTRICT)
    - 1) PROVIDE AND PLACE CONTROLLED LOW STRENGTH MATERIAL PER APWA SECTION 31 05 15 IF ALLOWED BY PIPE MANUFACTURER.
    - 2) PREVENT PIPE FLOTATION BY INSTALLING IN LIFTS AND PROVIDE PIPE RESTRAINTS AS REQUIRED BY PIPE MANUFACTURER.
    - 3) RESET PIPE TO LINE AND GRADE IF PIPE FLOATS OUT OF POSITION.
3. PIPE: IRRIGATION WATER LINE MAIN SHALL BE PVC PURPLE PIPE. IRRIGATION SERVICE LATERAL SHALL BE HDPE, AS PER DISTRICT.
4. PIPE LOCATION: INSTALL PIPE IN CENTER OF TRENCH OR NO CLOSER THAN 9-IN FROM WALL OF PIPE TO WALL OF TRENCH.
5. PEA GRAVEL: PEA GRAVEL IS NOT ALLOWED IN ANY PART OF THE PIPE ZONE.
6. FOUNDATION STABILIZATION: USE SEWER ROCK. APWA SECTION 31 05 13. INSTALLATION OF STABILIZATION-SEPARATION GEOTEXTILE PER APWA SECTION 31 05 19 WILL BE REQUIRED TO SEPARATE BACKFILL MATERIAL AND NATIVE SUBGRADE MATERIALS IF SEWER ROCK CANNOT PROVIDE A WORKING SURFACE OR TO PREVENT SOILS MIGRATION.



**IRRIGATION TRENCH SECTION  
& EXISTING MAIN LINE CONNECTION**

**SDWD  
STANDARD  
DETAIL**

FEBRUARY 2016

**109**